



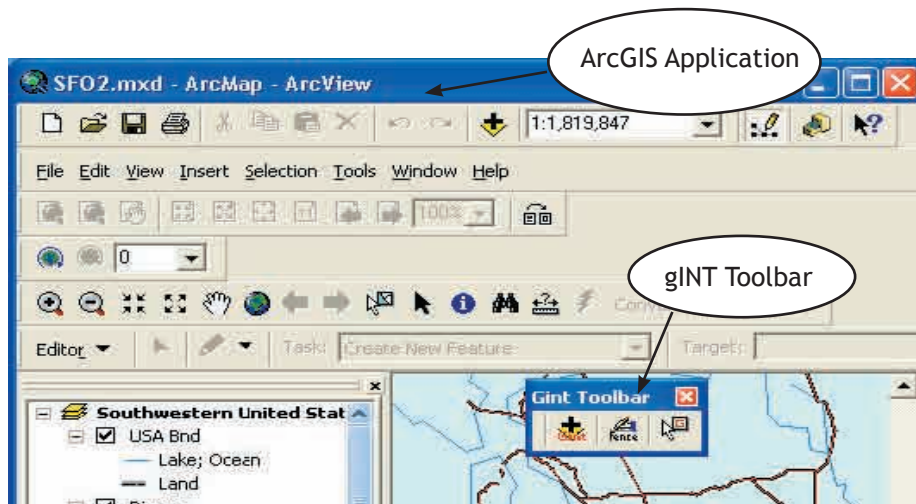
## Introduction to gINT for ArcGIS<sup>®</sup>

Now you can utilize gINT data within ArcGIS's powerful GIS interface with the new gINT for ArcGIS<sup>®</sup>, created to work with gINT v. 5 or later and ArcGIS v. 8 or later.

gINT for ArcGIS is an add-on that enables you to:

- \* Import your gINT projects into ArcGIS projects
- \* Select gINT project data from within ArcGIS
- \* View gINT project data details from within ArcGIS
- \* Preview, print and export gINT logs and fences from within ArcGIS

With gINT for ArcGIS, viewing or printing a gINT borehole log or fence within ArcGIS is as easy as right-clicking on a gINT point within an ArcGIS map.



Using gINT toolbar:

The gINT toolbar for ArcGIS contains three command buttons:



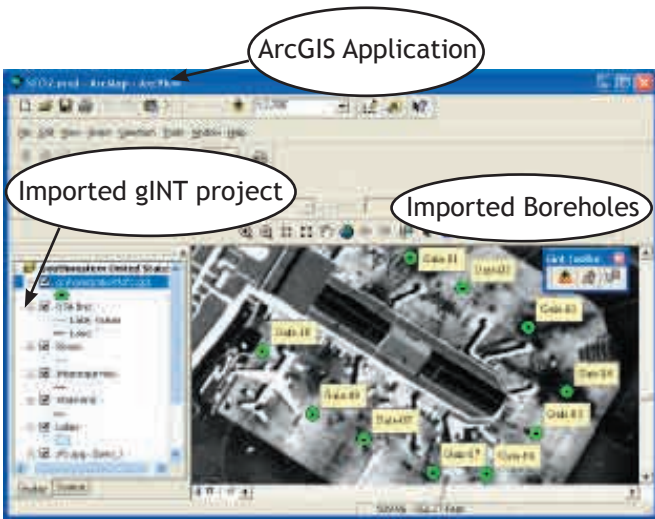
Import gINT projects button



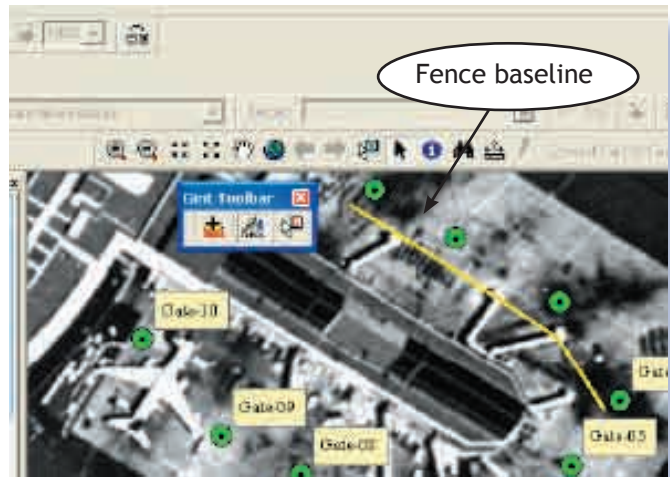
Draw Fence button



gINT Selection button



To import gINT project data, click the “Import gINT Projects” button. After selecting a gINT project and clicking “OK,” gINT project data becomes imported into the ArcGIS project.

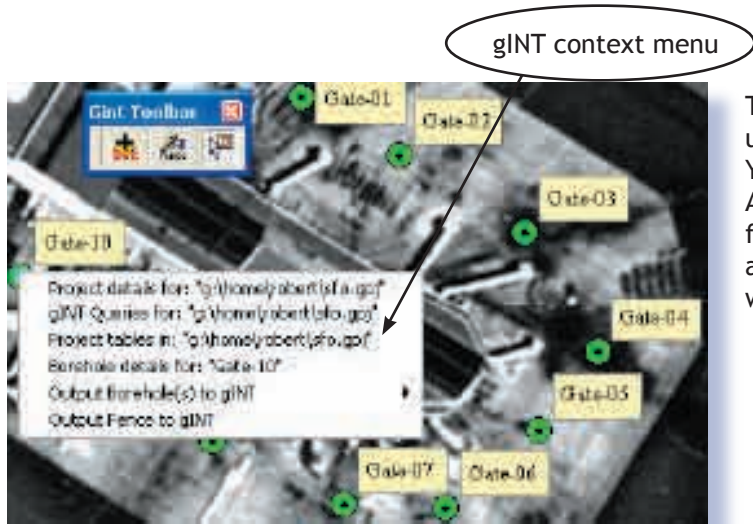


To draw a fence baseline, click “Draw Fence” button, click anywhere on ArcGIS map and start drawing. Double-click to end drawing.



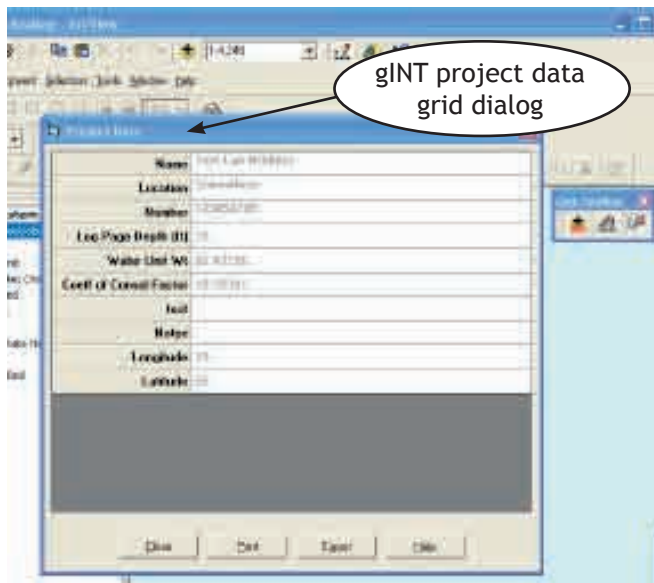
To select boreholes or to activate gINT toolbar context menus, click the “gINT selection” button. To select points, left click on ArcGIS map and drag a selection window over gINT points. To activate the context menu, right-click the map.

Using gINT context menus:

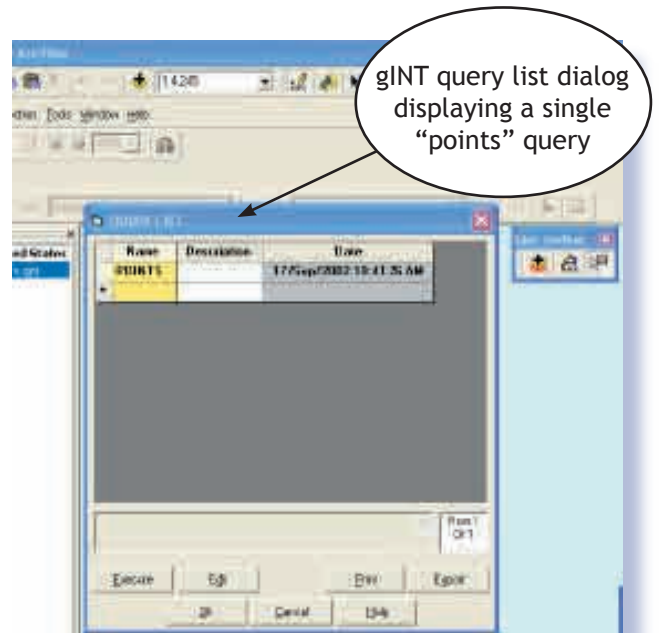


The gINT toolbar for ArcGIS can display a context menu used to access and output gINT project information. You can easily activate the gINT context menu in ArcGIS by right-clicking on any visible gINT point or fence baseline, or by selecting one or more gINT points and right-clicking anywhere within the ArcGIS map window.

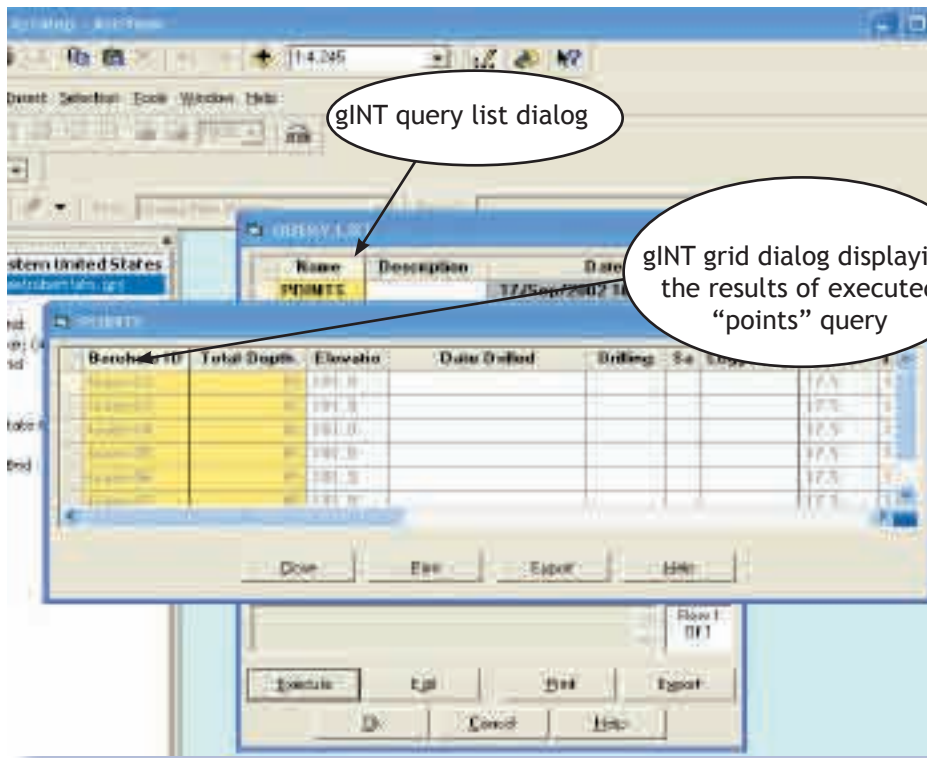
The gINT context menu consists of several menu items. When one of the menu items is selected, gINT is launched (if it is not already running) and executes the appropriate menu command. Following are some descriptions of gINT context menu commands.



The Project Details menu displays the project data for the selected project in a read-only grid dialog. Data from all information grid dialogs can be printed or exported to CSV (comma-separated values ASCII) or XLS (Microsoft® Excel) files (Excel must be installed for XLS export).



The gINT Queries menu displays the query grid dialog. You can write your own queries using standard Microsoft® ACCESS SQL statements.

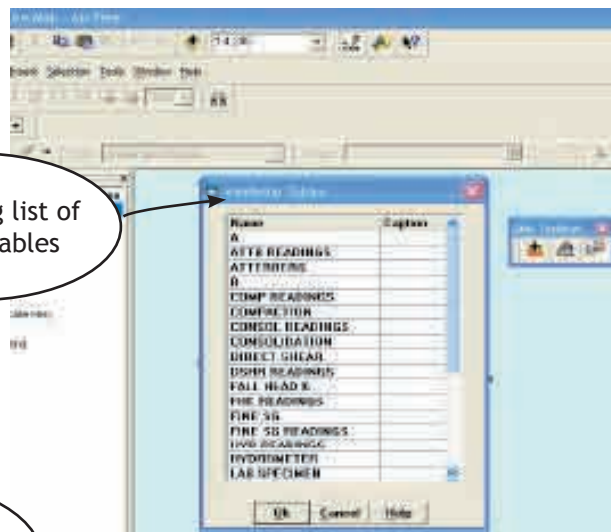


gINT query list dialog

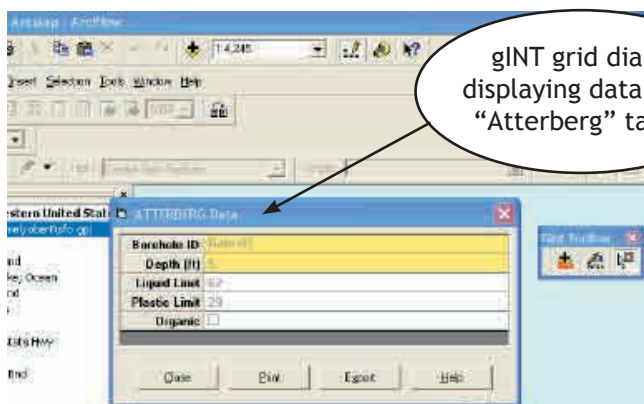
gINT grid dialog displaying the results of executed "points" query

This query list dialog contains names and descriptions of gINT queries. It can be used to create, edit or execute gINT queries. Executing a query displays query results in a read-only grid dialog.

The Project Tables menu displays a gINT dialog listing all gINT project tables that contain data associated with the selected gINT point.

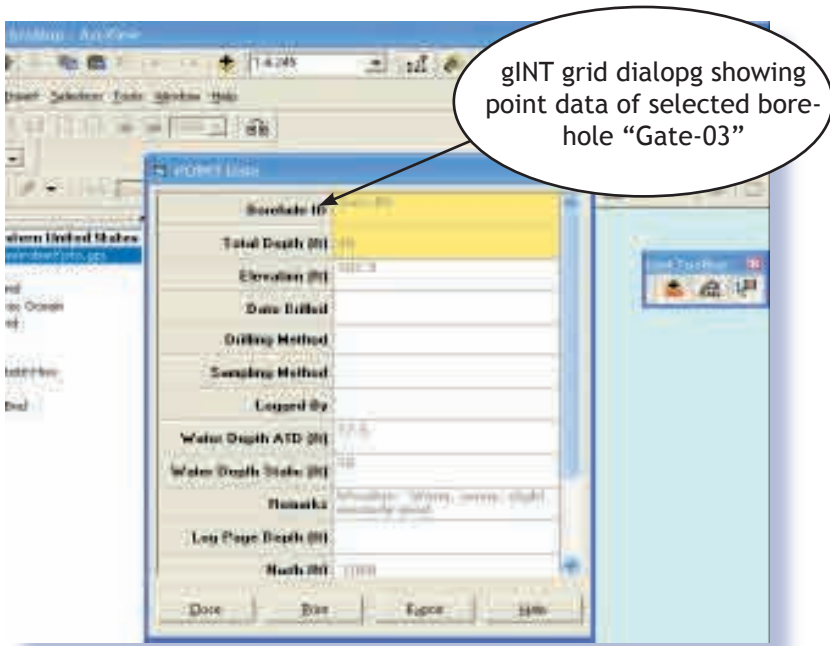


gINT dialog list of project tables



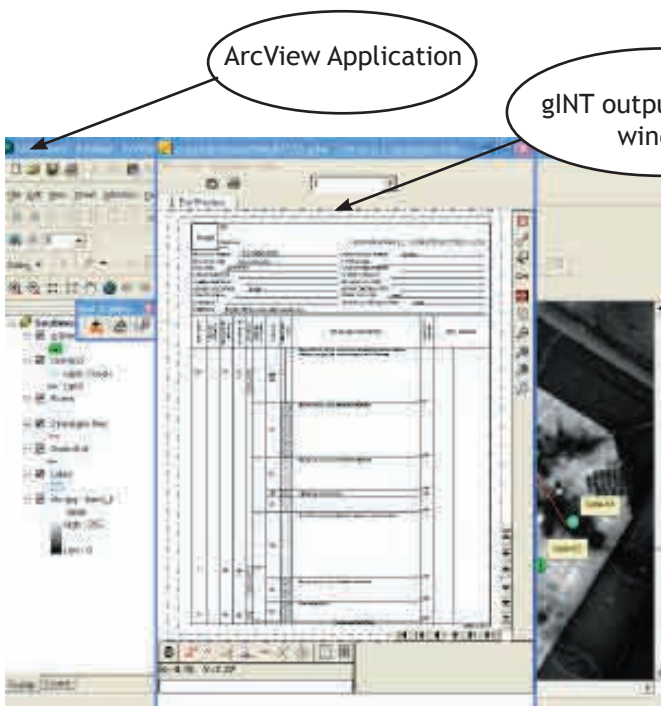
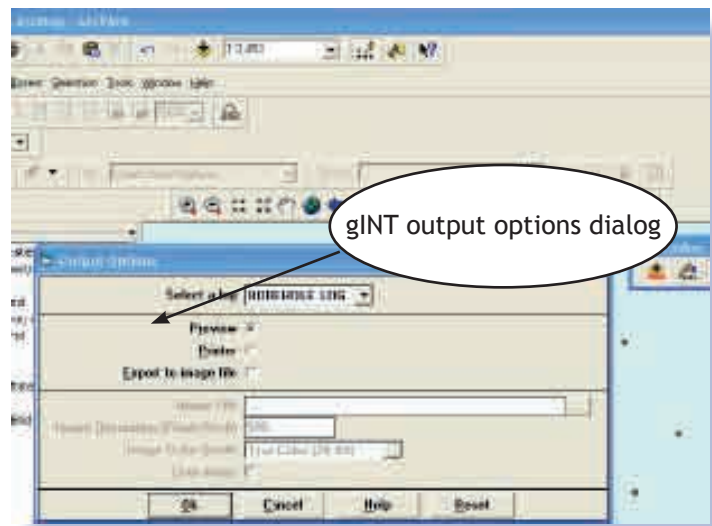
gINT grid dialog displaying data from "Atterberg" table.

Selecting one of the tables displays data from that table in a read-only grid dialog.

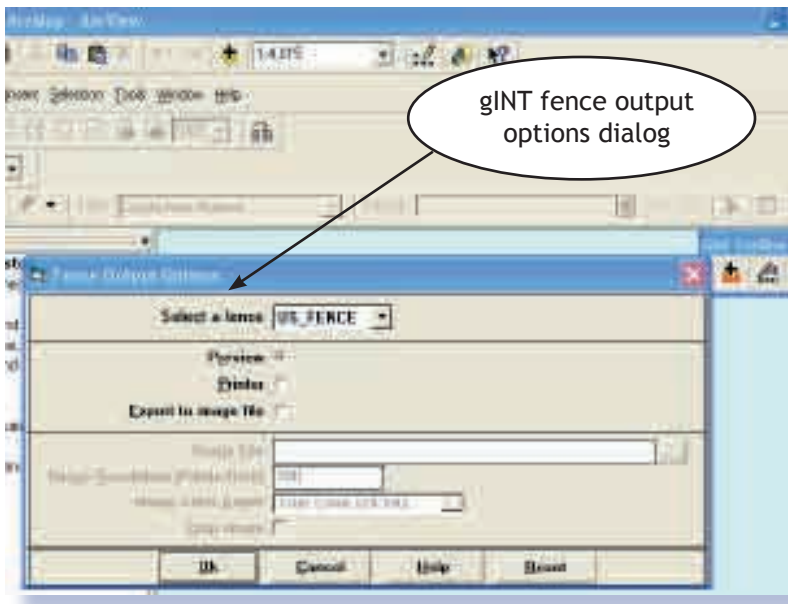


The Borehole Details menu displays point data for the currently selected borehole in a read-only grid.

The Borehole Details menu displays point data for the currently selected borehole in a read-only grid. gINT for ArcGIS The Output Boreholes menu displays one of two submenus: Current borehole or All Selected boreholes. (The All Selected boreholes menu is only enabled if one or more boreholes have been selected.) Clicking on one of these submenus displays the gINT output dialog, which displays various report output options.



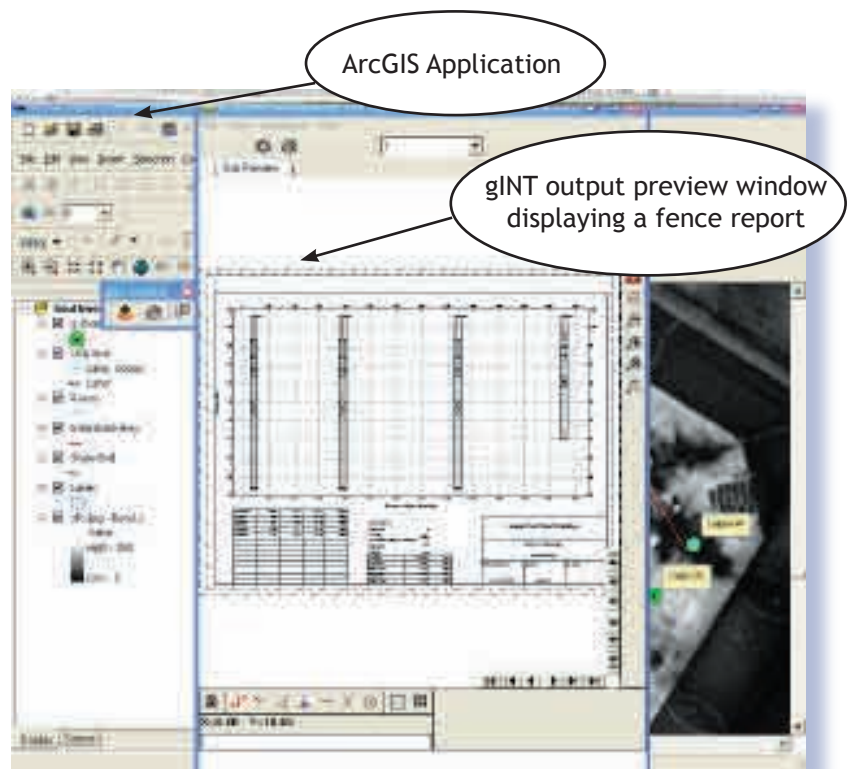
After selecting from output options and clicking "OK", borehole log output can be previewed, printed, saved or exported to a file. Boreholes from multiple projects can be printed simultaneously.



gINT fence output options dialog

Output Fence menu (only enabled if user clicked on a fence line, or if one or more boreholes are selected): displays the fence output dialog. This dialog displays various fence report output options. After selecting from fence output options and clicking [OK], fence report output can be previewed, printed or exported to a file. Fence reports utilizing borehole data from multiple projects can be printed simultaneously.

After selecting from output options and clicking "OK", fence output can be previewed, printed, saved or exported to a file. Fences from multiple projects can be printed simultaneously.



ArcGIS Application

gINT output preview window displaying a fence report

For more information about the gINT for ArcGIS, please contact us:



European Distributor • Leeke Associates • The Courtyard • 147 Worcester Road • Hagley • West Midlands • DY9 0NW • United Kingdom  
Tel: +44 (0)1562 882976 • Fax: +44 (0)1562 882164 • [www.leekeassociates.co.uk/gint.htm](http://www.leekeassociates.co.uk/gint.htm) • email: [gint@leekeassociates.co.uk](mailto:gint@leekeassociates.co.uk)